

**Mrs Malhotra**  
**Mr Parkin**  
**Class Hawking**

Meet the Teacher  
September 2025

---

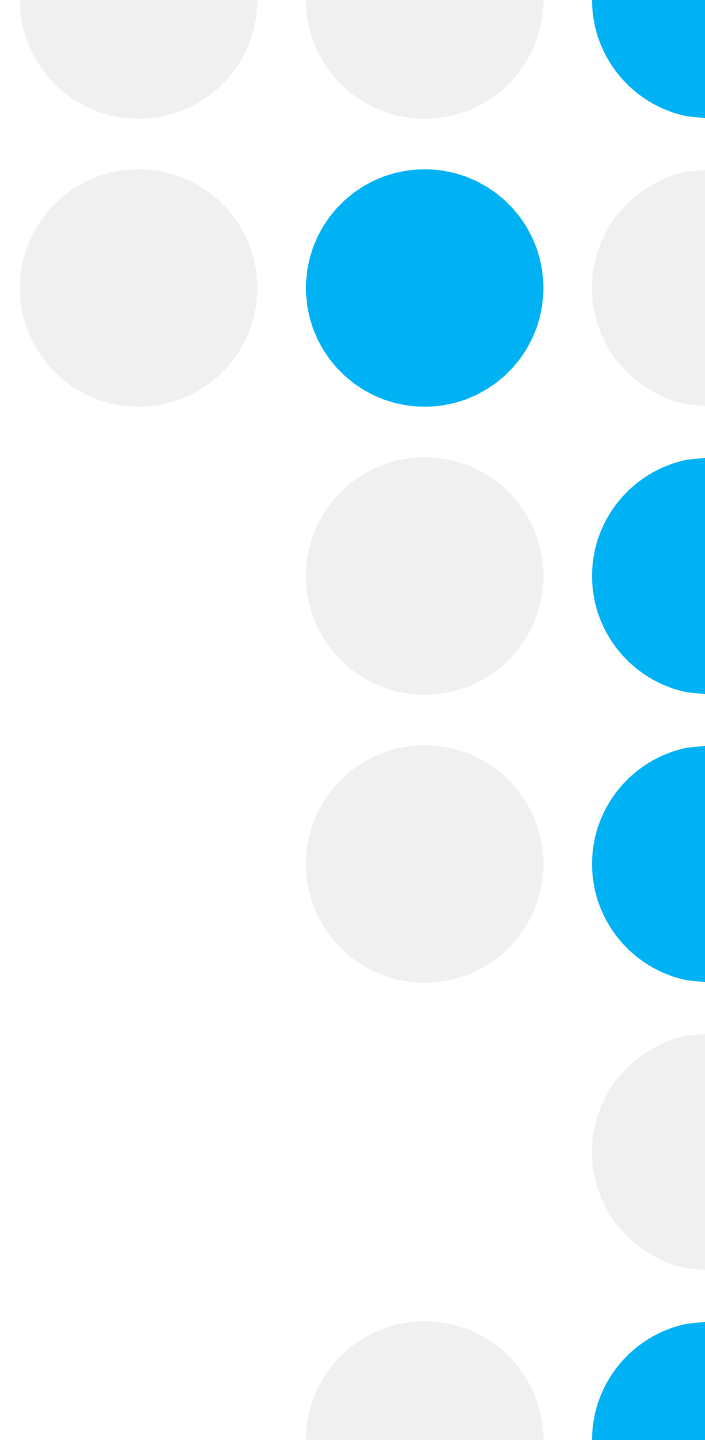


# All About Me...

- Mrs Malhotra
- Teaching for 18 years, predominantly in KS2 but have taught KS1 too
- Reading Lead and have an interest in History

## Mr Parkin

- Teaching for 12 years, started teaching in January 2013
  - Previously Head of Year 6 at Dedworth Middle School
  - Senco 3 Years
- 



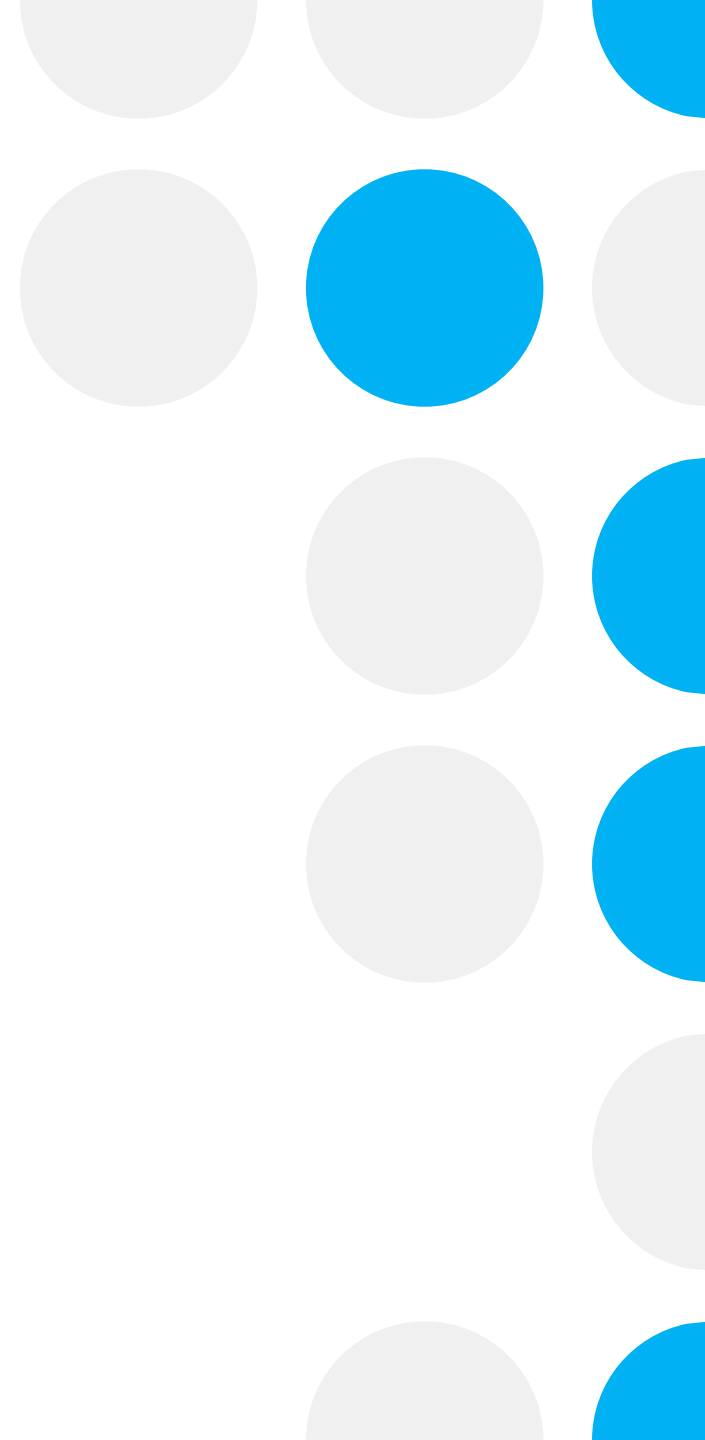
# Our Vision...

*And I will always guide you and satisfy you with good things. I will keep you strong and well. You will be like a garden that has plenty of water, like a spring of water that never goes dry.*

(GNT Isaiah 58:11)

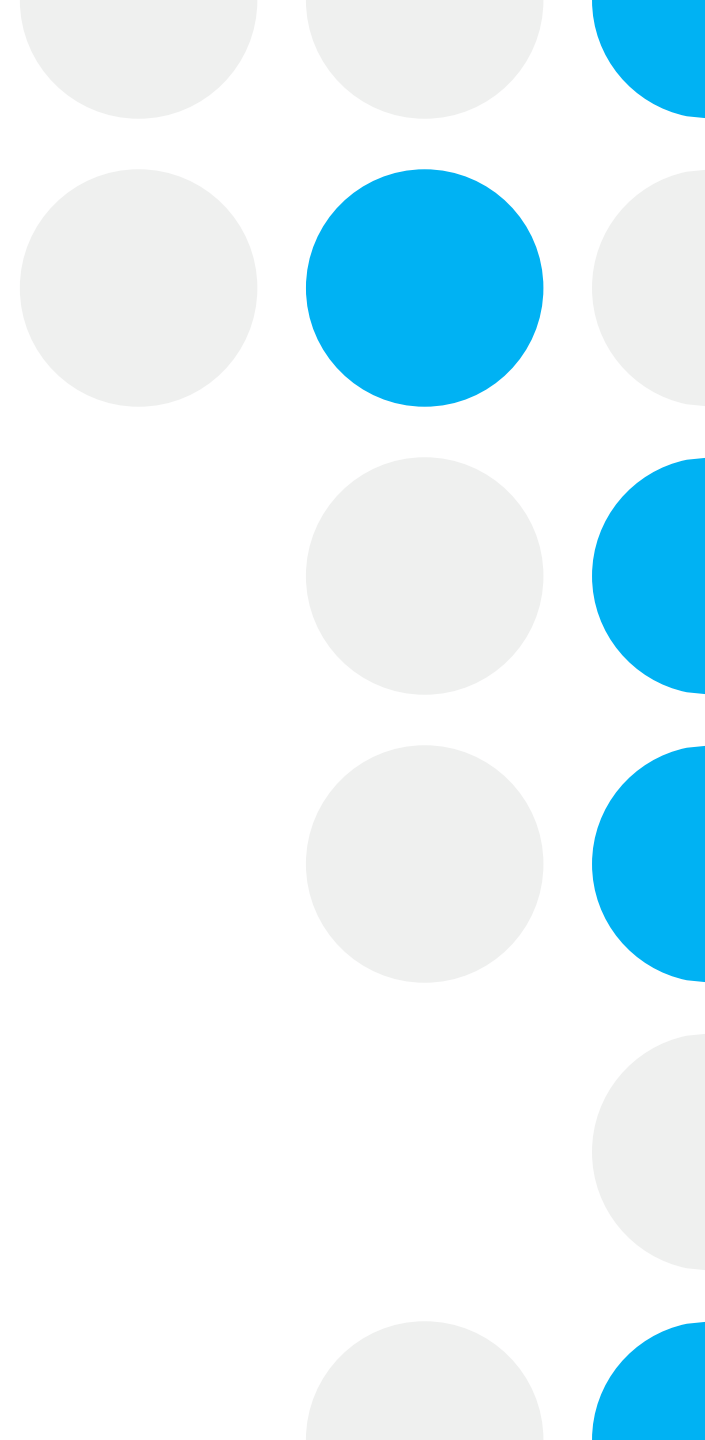
**Believe-Grow-Achieve**

---



# Our key values to achieve this...

- **Compassion**
    - **Wisdom**
  - **Responsibility**
- 



# **Our behaviour expectations are...**

- **Showing compassion to others**
    - **Making wise choices**
  - **Being responsible for ourselves,  
our equipment and the whole  
school community**
- 



# Lunchtime...



Lunches

Caterlink menu for school dinners.

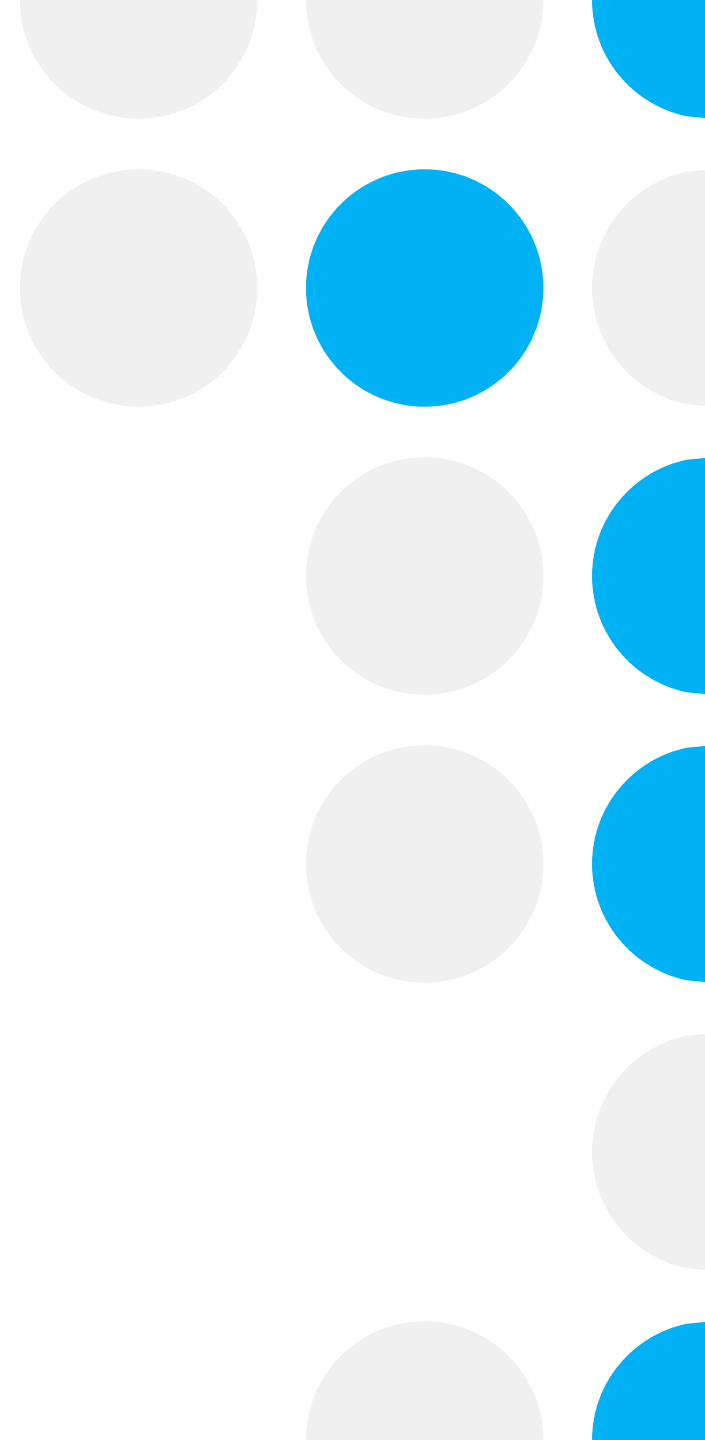
Healthy packed lunch.

Healthy snacks only.

Water bottle

# Talk4 Writing

- Learn an excellent example
  - Learn the techniques behind the text
  - Apply these techniques in short burst pieces
  - Adapt their own text using the example- with support
  - Innovate their own text -without support
- 



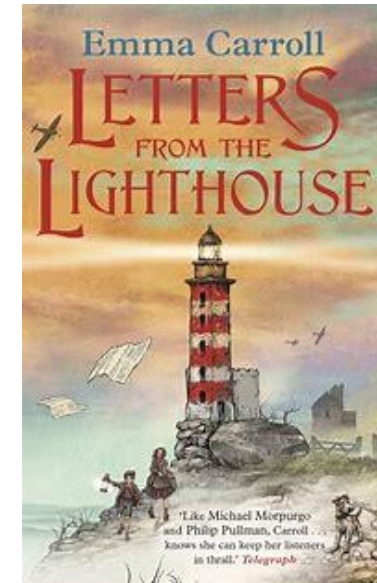
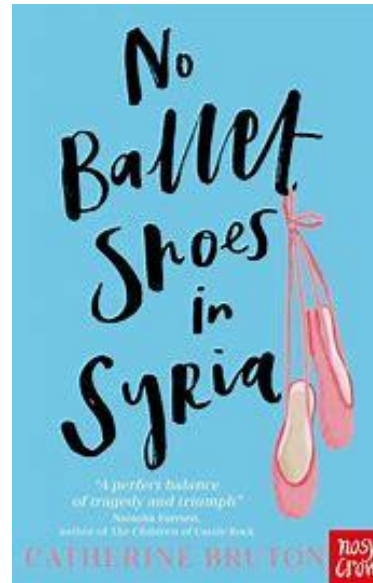
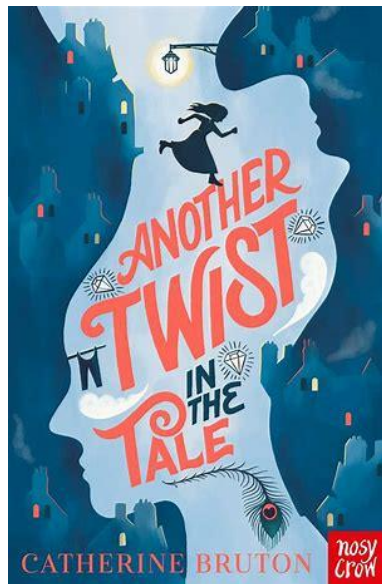
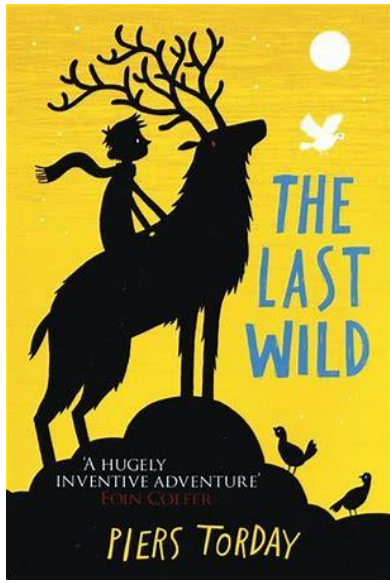
# Guided Reading

- Use Accelerated Reader
  - ZPD given to each child
  - Wide range of books in the library
  - Read at least 3-4 times a week to an adult
  - Adult to sign reading record- checked every Friday.
- 



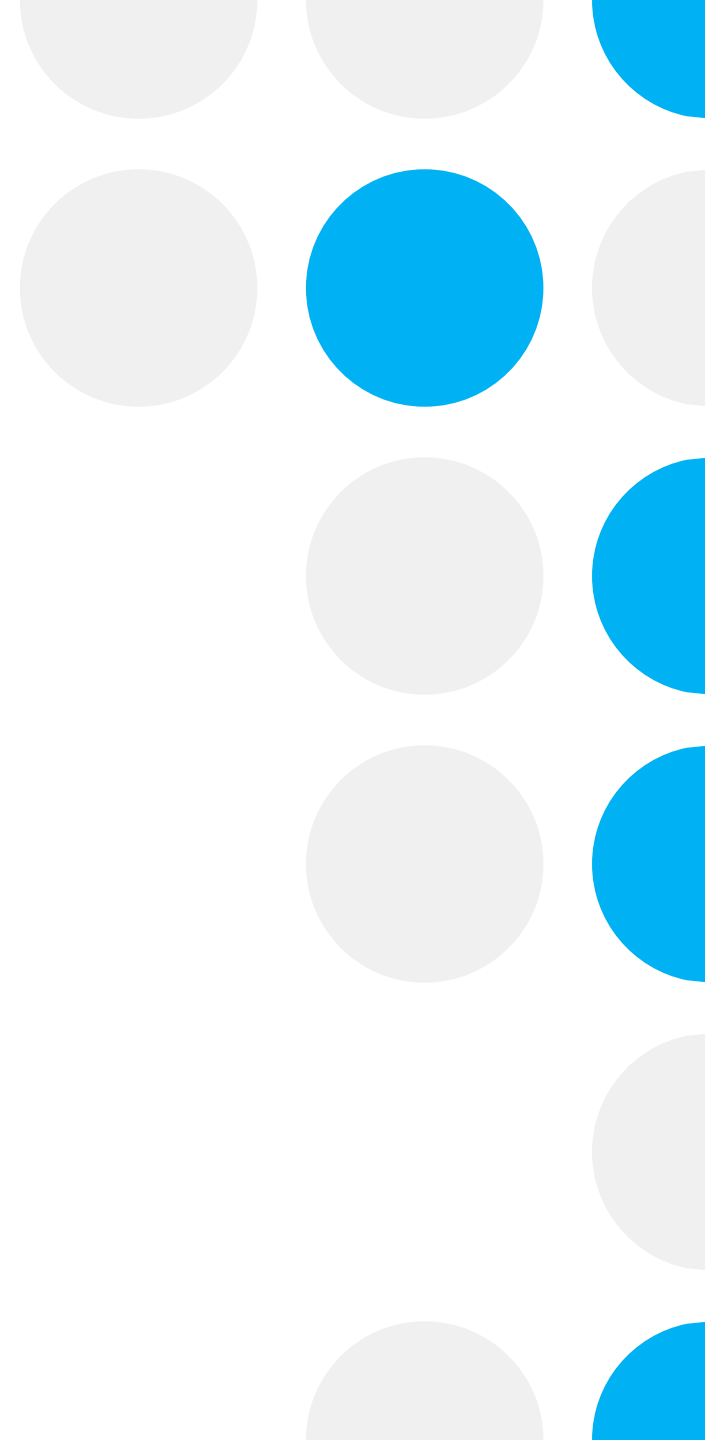
# Guided Reading

- Autumn 1 - The Last Wild by Piers Torday



# Maths

- We will be focusing on place value, addition/subtraction and multiplication/division.
  - Not about flying through the curriculum!
  - Opportunities to practice fluency and address misconceptions
  - About children learning not covering curriculum
  - Big push to develop multiplication and division knowledge ahead of Year 4.
- 



# Spelling:

---



In Year 6, we focus on spelling rules and patterns.



Phonics/Spelling lessons are taught daily by the class teacher for 15-20 minutes a day.



Children with significant gaps will have a daily 10-minute intervention with me to support their development.



Pupils will have opportunities to use words with the spelling rule independently. This might be a short quiz or when reviewing vocabulary in T4W (these words will not be sent home)

Year 6	Autumn 1	Autumn 2	Spring 1	Spring 2	Summer 1	Summer 2
English	<b>Poetry:</b> Into the lair of Baron Jugula – Brian Moses <b>Fiction:</b> Dead Man’s Cove Suspense toolkit <b>Non-Fiction:</b> Information, Discussion, Explanation & Persuasion Newspaper report – Autumn 2	<b>Poetry:</b> Tyger, Tyger – William Blake <b>Non-Fiction:</b> Information, Discussion, Explanation & Persuasion Letters from Boo – levels of formality letter for Rhos <b>Fiction:</b> Beating the Monster – facing our fears; suspense toolkit – SPRING 1		<b>Poetry:</b> Into the lair of Baron Jugula – Brian Moses <b>Fiction:</b> Setting description based on Darwin’s Dragons? Cherry’s Necklace <b>Non-Fiction:</b> Information, Discussion, Explanation & Persuasion Electrical Safety leaflet	<b>Poetry:</b> Invictus – William Henley <b>Fiction:</b> <b>Non-Fiction:</b> Information, Discussion, Explanation & Persuasion Propaganda posters/letters to family/postcards (formal vs informal)/diary entry	
Reading	The Last Wild	Another Twist in the Tale	No Ballet Shoes in Syria	No Ballet Shoes in Syria	Darwin’s Dragon	Letters from the Lighthouse
Maths	Place Value Addition and Subtraction Multiplication and Division	Multiplication and Division Fractions Converting Units of measure	Ratio Algebra Decimals	Fractions, decimals and percentages Area, perimeter and volume Statistics	Shape Position and direction Revision week	Consolidation review Themed projects and problem solving
Science	Living things and their habitats	Evolution and Inheritance	Light	Electricity	Animals including humans	
Computing	<b>Computing systems and networks:</b> Bletchley Park <b>Online safety</b>	<b>Programming:</b> Intro to Scratch <b>Online safety</b>	<b>Data handling 1:</b> Big data 1 <b>Online safety</b>	<b>Programming:</b> Excel spreadsheet <b>Online safety</b>	<b>Data handling 2:</b> Big data 2 <b>Online safety</b>	<b>Skills showcase:</b> Inventing a product <b>Online safety</b>
History/ Geography	Crime and Punishment over 1,000 years	Why does population change?	What was the impact of World War II on the people of Britain?	Where does our energy come from?	What can the census tell us about our local area?	Can I carry out an independent fieldwork enquiry?
Art and Design/ Design Technology	Photography?	<b>Textiles:</b> Waistcoats?	Make my voice heard	<b>Structure:</b> playgrounds	Still life	<b>Digital world:</b> Navigating the world?
Music	Advanced rhythms	Songs of World War 2	Dynamics, pitch and tempo ( <b>Theme: Fingal’s cave</b> )	Film music	Theme and variations ( <b>Theme: Pop Art</b> ) Songs of WW2	Practicing production songs
French	<b>Le week-end:</b> the weekend	<b>Les vêtements:</b> clothes	<b>Ma journée:</b> my day	<b>Les transport:</b> transport	<b>Le sport:</b> sport	<b>On va faire la fete:</b> we celebrate
PE	<b>Real PE Unit 1:</b> Personal	<b>Real PE Unit 2:</b> Social	<b>Real PE Unit 3:</b> Cognitive	Jane Douglass Dance – Electricity	<b>Real PE Unit 5:</b> Physical	<b>Real PE Unit 6:</b> Health and fitness
	Invasion Games: hockey	Netball	Rugby	Cricket	Athletics	Tennis

<b>RE</b>	<b>Islam:</b> What is the best way for a Muslim to show commitment to God?	<b>Christianity:</b> Do Christmas celebrations and traditions help Christians understand who Jesus was and why he was born	<b>Christianity:</b> Is anything ever eternal?	<b>Islam:</b> Does belief in <u>Akhirah</u> (life after death) help Muslims lead good lives?	<b>Humanism:</b> How do human beings understand the world and what are their ethics?	<b>Islam:</b> Does belief in <u>Akhirah</u> (life after death) help Muslims lead good lives?
<b>PSHCE</b>	Being me in my world	Celebrating differences	Dreams and goals	Healthy me	Relationships	Changing me
<b>Safeguarding</b>	Online safety – computing unit	Railway safety talk	Road Safety Online safety day	Healthy Me – PSHE unit Electrical safety - science	Healthy relationships – PSHE	Drowning prevention week Transition days Changing me - PSHE <u>Bikeability</u> It's Your Move – Transition talk
<b>Trips</b>		<u>Rhos</u>	History workshop Helping Refugees Rebuild their lives in Berkshire charity	Trip to Maidenhead Mosque	Woolley Firs	Trip to Winchester Science Museum to support science objectives

# Homework:



Reading every night - please sign reading records. Will be checked on a Friday



Times Table Rockstars challenge



English and maths will be given out on a Wednesday and will be due in the following Wednesday

# SATs:

The statutory key stage 2 SATs dates run from **11 – 14 May 2026**. These tests cover English grammar, punctuation and spelling, reading, and mathematics.

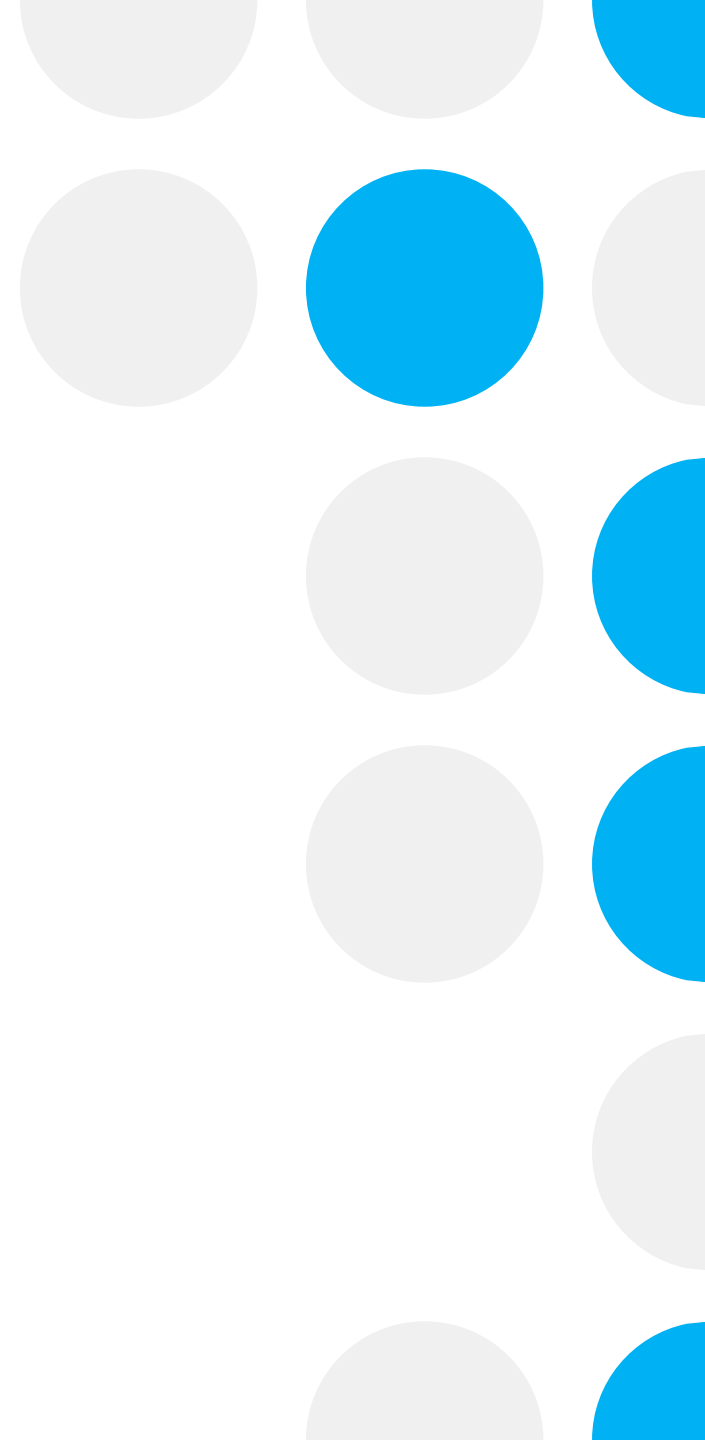
- **Monday 11 May 2026:** English Grammar, Punctuation and Spelling: Paper 1: Grammar and Punctuation, 45 minutes
- **Monday 11 May 2026:** English Grammar, Punctuation and Spelling: Paper 2: Spelling, 20 minutes
- **Tuesday 12 May 2026:** English Reading, 60 minutes
- **Wednesday 13 May 2026:** Mathematics Paper 1: Arithmetic, 30 minutes
- **Wednesday 13 May 2026:** Mathematics Paper 2: Reasoning, 40 minutes
- **Thursday 14 May 2026:** Mathematics Paper 3: Reasoning, 40 minutes

**Don't Panic!**

---

# PE Days...

- Tuesday (indoor)
  - Friday (outdoor)
  - PE kit – navy t-shirt with logo, black/navy joggers/leggings and shorts
  - Stud earrings only (tape ears before coming to school) and no jewellery
- 



# Rhos Y Gwaliau



Dates: Sunday 9<sup>h</sup> November –  
Saturday 15<sup>th</sup> November

---

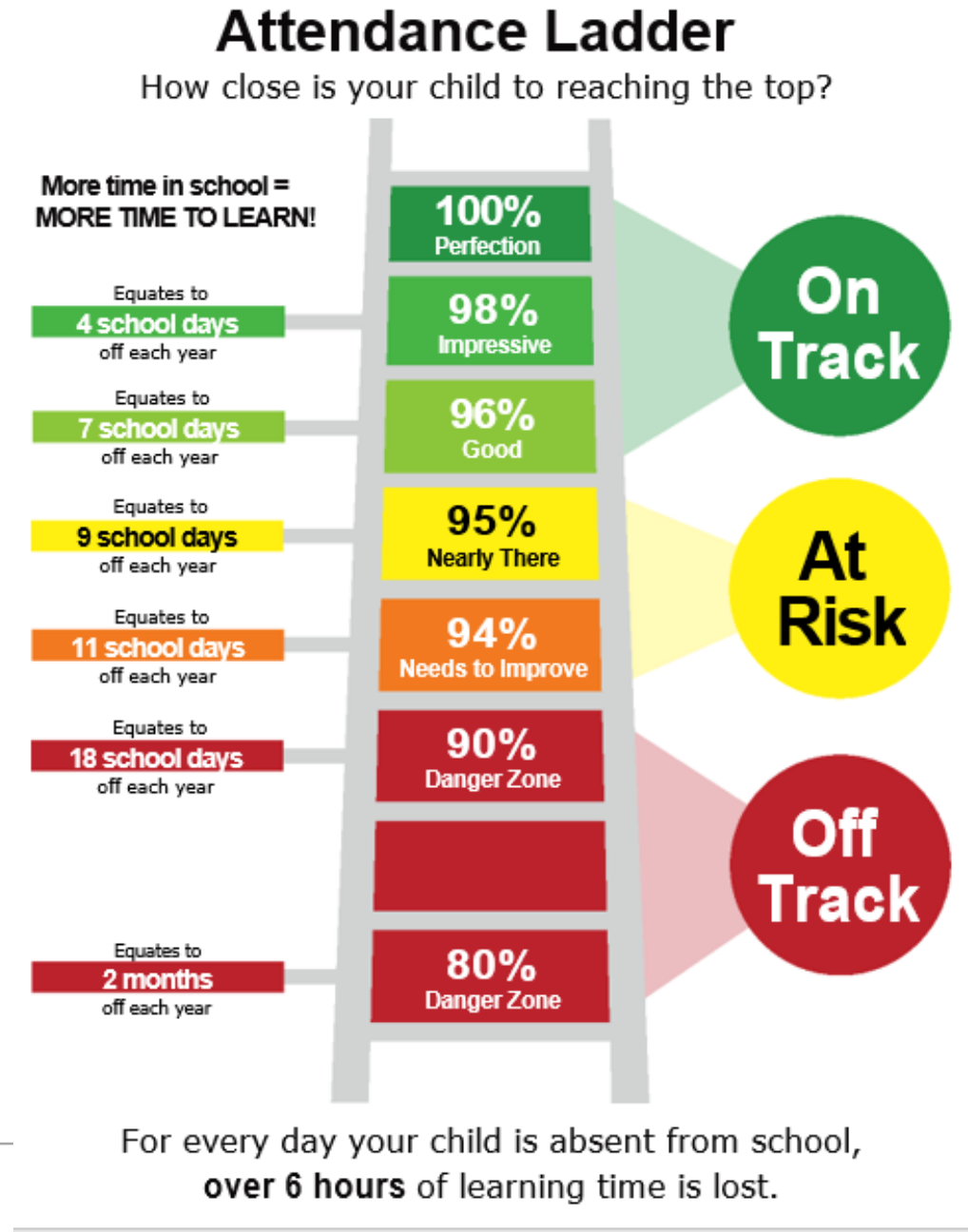


# Seesaw

- Main method of communication from the school and class teacher.
  - Recommend downloading the app for easy access.
  - Up to 3 working days to respond.
  - Contact the school office for anything urgent.
- 

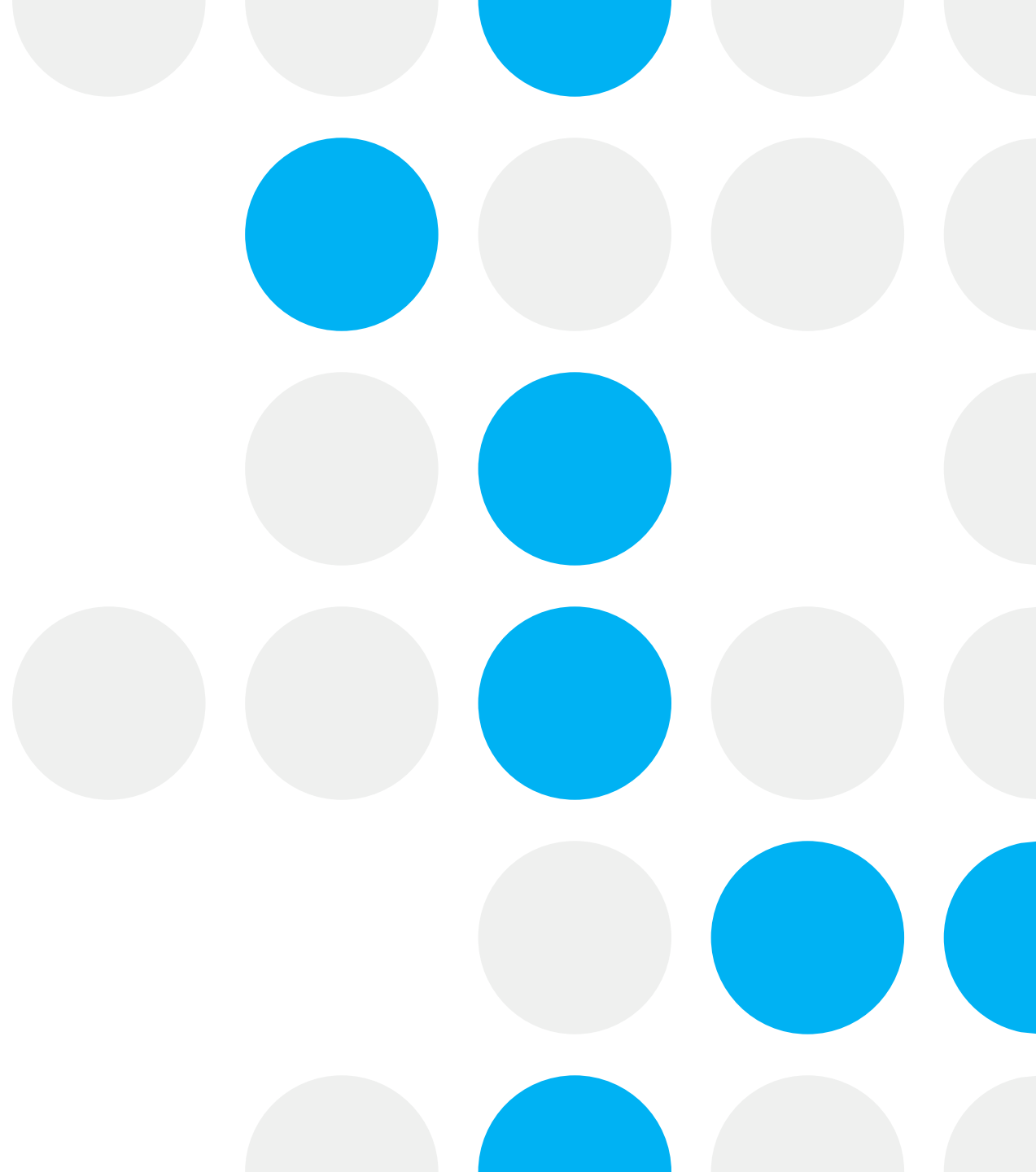


# Attendance



# Final reminders...

- Gates open between 8.30-8.45am
  - Register at 8.45 (Gates will be closed, if late please sign in at the office)
  - No need to bring stationery, this will be provided in class
- 



# Recommended reading list...

- [https://www.thereaderteacher.com/\\_files/ugd/d5a56e\\_b2db5578f9ef490290fa638256fe5150.pdf?index=true](https://www.thereaderteacher.com/_files/ugd/d5a56e_b2db5578f9ef490290fa638256fe5150.pdf?index=true) (Year 3)
  - [https://www.thereaderteacher.com/\\_files/ugd/d5a56e\\_24ca7c7cc5f148b3a5b883eac43ad7e1.pdf?index=true](https://www.thereaderteacher.com/_files/ugd/d5a56e_24ca7c7cc5f148b3a5b883eac43ad7e1.pdf?index=true) (Year 4)
  - [https://www.thereaderteacher.com/\\_files/ugd/d5a56e\\_a1fb08d3e08f4b149ba95e66bbfb4320.pdf?index=true](https://www.thereaderteacher.com/_files/ugd/d5a56e_a1fb08d3e08f4b149ba95e66bbfb4320.pdf?index=true) (Year 5)
  - [https://www.thereaderteacher.com/\\_files/ugd/d5a56e\\_e2e6237b5cdf4586a117841c3a258659.pdf?index=true](https://www.thereaderteacher.com/_files/ugd/d5a56e_e2e6237b5cdf4586a117841c3a258659.pdf?index=true) (Year 6)
-